

## ***Outdoor Essentials***



## **LP / NG Conversion Guide**

***This Fire Table is intended for outdoor use only in a well-ventilated space. It cannot be used inside a screened-in porch, gazebo, building, garage or any other enclosed area***

### **DANGER**

#### ***IF YOU SMELL GAS:***

***Shut off gas to the burner.***

***Extinguish any open flame.***

***If odor continues, keep away from the appliance and immediately call your gas supplier or fire department.***

### **WARNING**

***Do not light the burner without reading the LIGHTING instruction section of this manual.***

***DO NOT STORE OR USE GASEOLINE OR OTHER FLAMMABLE LIQUIDS OR VAPORS IN THE VICINITY OF THIS GAS APPLIANCE. DO NOT STORE LIQUID PROPANE CYLINDER NOT CONNECTED TO THIS APPLIANCE IN THE VICINITY OF THIS APPLIANCE. IF THESE WARNINGS AND INSTRUCTIONS ARE NOT FOLLOWED, A FIRE OR EXPLOSION MAY RESULT, CAUSING PROPERTY DAMAGE, PERSONAL INJURY OR DEATH.***

***Notice to Installation Professional: Leave these instructions with owner for future reference.***

# Warranty

HearthCo, Inc., manufacturer of precast GFRC (Glass Fiber Reinforced Concrete) products warrants to the original purchaser of HearthCo, Inc. products that we will repair or replace, at the sole option of the manufacturer, any HearthCo, Inc. product found to be defective in material or workmanship within five years of the original purchase..

This warranty applies only to HearthCo, Inc. products which have been stored, handled, installed and cared for in accordance with the recommendations provided in the HearthCo, Inc. information and care guide.

The HearthCo, Inc. product warranty is non transferable.

This warranty does not cover any HearthCo, Inc. product that has been installed then moved from the original place of installation or damages caused by:

1. *Failure of any finish, accessories, adhesives, caulk, grout, paint or failure of anything not related to the HearthCo, Inc. product.*
2. *Physical abuse, improper use of the product, damage from excessive heat or breakage not due to a manufacturing defect.*
3. *Failure to follow the recommendations provided in the HearthCo, Inc. information and care guide.*
4. *Installation or repair by a company or individual not recognized as a qualified technician.*

HearthCo, Inc. makes no implied or expressed warranty. HearthCo, Inc. shall not be liable in tort, contract, or otherwise, for any loss or any direct, consequential, incidental or exemplary damages arising from the use or inability hereunder is limited solely to repair or replacement, including necessary and reasonable labor charges of HearthCo, Inc. GFRC products.

This warranty gives the original purchaser of HearthCo GFRC products specific legal rights. Other rights may be available, which may vary state to state. To register a claim under this warranty, please write to:

HearthCo, Inc.  
C/O Warranty Dept.  
5781 Pleasant Valley Rd.  
El Dorado, CA 95623

# Conditions and Limitations

***HearthCo, Inc. warrants its products against manufacturing defects to the original purchaser only, provided that the purchase was made through an authorized HearthCo dealer and is subject to the following conditions and limitations:***”

This warranty is non-transferable and may not be extended what-so-ever by any HearthCo employee or by our representatives.

This product must be installed by a licensed, authorized service technician or contractor. Installation must be done in accordance with the installation instructions included with the product and all local and national building and fire codes.

This limited warranty does not cover damages caused by misuse, lack of maintenance, hostile environments, accidents, alterations, abuse or neglect and parts installed from other manufacturers will nullify this warranty

This limited warranty further does not cover any scratches, corrosion or discoloring by heat, abrasive and chemical cleaners, nor chipping that occurs during the installation of this product and or the use of this product.

This warranty extends to the replacement of warranted parts, which are defective in material or workmanship provided that the product has been used in accordance with the operation instructions and under normal conditions.

After year one, HearthCo may at its discretion, fully discharge all obligations with respect to this warranty by refunding to the original purchaser the wholesale price of any warranted defective part(s).

HearthCo will not be responsible for the installation, labor or any other costs or expenses related to the re-installation of a warranted part, and such expenses are not covered by this warranty.

Notwithstanding any provision contained in the warranty, HearthCo’s responsibility under this warranty is defined as above and it shall not in any event extend to any incidental, consequential, or indirect damages.

This warranty defines the obligation and liability of HearthCo with respect to the HearthCo GFRC products and any other warranties expressed or implied with respect to this product, its components or accessories are excluded.

HearthCo neither assumes, nor authorizes any third party to assume, on its behalf, any other liabilities with respect to the sale of this product.

HearthCo will not be responsible for: over firing, blow outs caused by environmental conditions such as strong winds, or inadequate ventilation.

Any damages to the HearthCo GFRC product due to weather damage, hail, rough handling, damaging chemicals or cleaners will not be the responsibility of HearthCo.

A bill of sale or copy will be required with a model number when making any warranty claims from HearthCo.

HearthCo reserves the right to have its representative inspect any product or part prior to honoring any warranty claim.

HearthCo shall not be liable for any transportation charges, labor costs, or export duties.

# Precast Concrete Information & Product Care Guide

- We want to thank you for purchasing a **HearthCo, Inc.** GFRC (Glass Fiber Reinforced Concrete) Outdoor Living Product. We have created this information and care guide to help you gain some understanding and to aid you in the care of your fireplace mantel.
- Our GFRC products are made from some of the highest quality materials available. HearthCo GFRC products are manufactured using non combustible materials; therefore, they will not burn and there is zero flame spread. HearthCo GFRC products are hand crafted individually to give variation in color and texture to replicate natural stone
- HearthCo GFRC products are manufactured using a Portland Cement mixture. Cements are very durable and strong and somewhat stain resistant. It is very important to note that the product comes from the factory with a sealer applied and is stain resistant, not stain proof.
- We do recommend keeping you HearthCo GFRC product clean and to re-seal at least once every year, very similar to sealing the grout on your tile. This will aid in maintaining stain resistance. Use a type of sealer that is designed to penetrate concrete or stone products. Make sure to read and to follow all the instructions.
- This is a concrete product, as concrete cures, small hair line cracks may appear in time. This is a normal occurrence, use the patch material, fill in the crack, re-seal.
- In the event that something is spilled on the product we recommend as follows:
  - **Beverage Drinks:**
  - Using a clean cloth, dab the liquid to soak up the excess only, do not scrub. Then flush the area with clean fresh water. If more cleaning is needed, gently clean with a non detergent cleaning solution.
  - **Soils, dust or dirt:**
  - First use a vacuum to remove any of the debris on the mantel. If more cleaning is necessary gently clean with a non detergent cleaning solution.
  - **Paint:**
  - If latex paint, use paper towels to soak up excess paint. Then flush the area with clean fresh water. If more cleaning is needed, gently clean with a non detergent cleaning solution.
- **HearthCo, Inc.** has taken the greatest care in manufacturing the highest quality GFRC products possible. Do to the characteristics of precast products; **HearthCo, Inc.** assumes no responsibility for the cleaning and care of your **HearthCo, Inc.** fireplace mantel.

***WARNING! Failure to follow these instructions could result in property damage, personal injury or death. Read and follow all warnings and instructions in this manual prior to operating this product.***

# Safe Operation Practices

- This Fire Pit / Fire Table must be assembled exactly according to the instructions in the manual. Please review the assemble instructions to confirm correct assembly and perform the required leak tests performed before operating the Fire Pit / Fire Table.
- Read the entire instruction manual before operating the Fire Pit / Fire Table.
- The Fire Pit / Fire Table must be used only outdoors in a well-ventilated space. It cannot be used inside a screened-in porch, gazebo, building, garage or any other enclosed area.
- Do not use this Fire Pit / Fire Table in windy areas or settings. High wind can cause blow-outs and adversely affect the performance of this Fire Pit / Fire Table.
- This Fire Pit / Fire Table must not be used or installed in or on any RV and/or boat.
- Under no circumstances should this Fire Pit / Fire Table be modified.
- Do not operate Fire Pit / Fire Table under overhead combustible materials.
- Maintain proper clearances to combustibles, 20" on all sides of the Fire Pit / Fire Table.
- You must turn off the gas supply valve when the Fire Pit / Fire Table is not in use.
- Do not attempt to use a propane cylinder that is not equipped with a QCC1 type connection.
- Inspect the fuel supply hose before each use. If there is evidence of excessive abrasion or wear or the hose is cut, it must be replaced prior to using the Fire Pit / Fire Table with a replacement hose assembly specified by HearthCo, Inc.
- Leak test the unit before the initial use, annually, and whenever any gas components are replaces.
- Follow lighting instructions carefully when operating the Fire Pit / Fire Table.
- The burner valve must be off when turning the propane cylinder valve on.
- Adults and especially children should be alerted to the hazards of an open flame, high temperatures of the media and high temperatures of the surrounding concrete opening.
- Do not leave Fire Pit / Fire Table unattended when operating.
- Keep any electrical supply cords and fuel supply hoses away from any heated surfaces.
- Do not allow cold water (rain, sprinklers, hose, etc..) to come in contact with the Fire Pit / Fire Table while in use. A large temperature differential can cause cracking in the concrete surfaces.
- Do not use a pressure washer to clean any part of the unit.

# General Information

**CALIFORNIA PROPOSITION 65:** The burning of gas fuel creates by-products, some of which are on the list as substances known by the State of California to cause cancer or reproductive harm. When burning a gas appliance always ensure adequate ventilation to the unit, to minimize exposure to such substances.

## ***Propane Cylinder Specifications:***

***WARNING! Failure to follow these instructions could result in property damage, personal injury or death. Read and follow all warnings and instructions in this manual prior to operating this product.***

When using propane from a portable cylinder, you must use the regulator supplied from the manufacturer. Cylinders to be used with this unit must be supplied with a QCC1 cylinder valve. A QCC1 cylinder has a positive seating connection, which will not allow gas flow until a positive seal has been achieved. It is also equipped with an excess flow device. In order to attain full flow to the Fire Pit / Fire Table, the valves must be in the off position when the cylinder valve is turned on.

A dented or rusty cylinder may be hazardous and should be checked by your propane supplier. Never use a cylinder with a damaged valve.



## **Gas Hook-Up Instructions:**

**Piped in Propane Gas Hook-Up:** The piping up to the Fire Pit / Fire Table is the responsibility of the installer and piping should be located to fit in the cavity of the Fire Pit / Fire Table. Use a flexible metal connector to hook up the piped in gas lines to the gas valve that is supplied with the Fire Pit / Fire Table. Ensure that the connector does not pass through a wall, floor, ceiling or partition, and is protected from damage. Do not use a hose to connect the Fire Pit / Fire Table except to connect the cylinder regulator to the piping system. It must be connected with rigid pipe, copper tube or an approved flexible metal connector.

The installation must comply with National Fuel Gas code, ANSI Z223.1 in the United States. The gas supply pipe must be sufficiently sized to supply the BTU/h specified with the Fire Pit / Fire Table , based on the length of the piping run.

**Piped in Natural Gas Hook-Up:** The piping up to the Fire Pit / Fire Table is the responsibility of the installer and piping should be located to fit in the cavity of the Fire Pit / Fire Table. Use a flexible metal connector to hook up the piped in gas lines to the gas valve that is supplied with the Fire Pit / Fire Table. Ensure that the connector does not pass through a wall, floor, ceiling or partition, and is protected from damage. Do not use a hose to connect the Fire Pit / Fire Table except to connect the cylinder regulator to the piping system. It must be connected with rigid pipe, copper tube or an approved flexible metal connector.

The installation must comply with National Fuel Gas code, ANSI Z223.1 in the United States. The gas supply pipe must be sufficiently sized to supply the BTU/h specified with the Fire Pit / Fire Table , based on the length of the piping run.

## **Leak Testing Instructions:**

***WARNING! A leak test must be performed annually and each time a cylinder is hooked up or if a part of the gas system is replaced.***

***WARNING! Never use an open flame to check for gas leaks. Be certain no sparks or open flames are in the area while you check for leaks. Sparks or open flames will result in a fire or explosion, damage to property, serious bodily injury , or death.***

**Leak Testing:** This must be done before initial use, annually, and whenever any gas components are replaced or serviced. Do not smoke while performing this test, and remove all sources of ignition. Turn burner valve to the off position. Turn gas supply valve on.

Brush a half-and-half solution of liquid soap and water onto all joints and connections of the regulator, hoses, gas lines, air shutter and valves.

Bubbles will indicate a gas leak. Either tighten the loose joint or have the part replaced with one recommended by the HearthCo, Inc. service department. Have the Fire Pit / Fire Table inspected by a certified gas installer or contractor.

If the leak cannot be stopped, immediately shut off the gas supply, disconnect it, and have the grill inspected by a certified gas installer or contractor. Do not use the Fire Pit / Fire Table until the leak has been corrected.

***This section covers  
Converting from  
LP (liquid propane)  
to  
NG (natural Gas)***

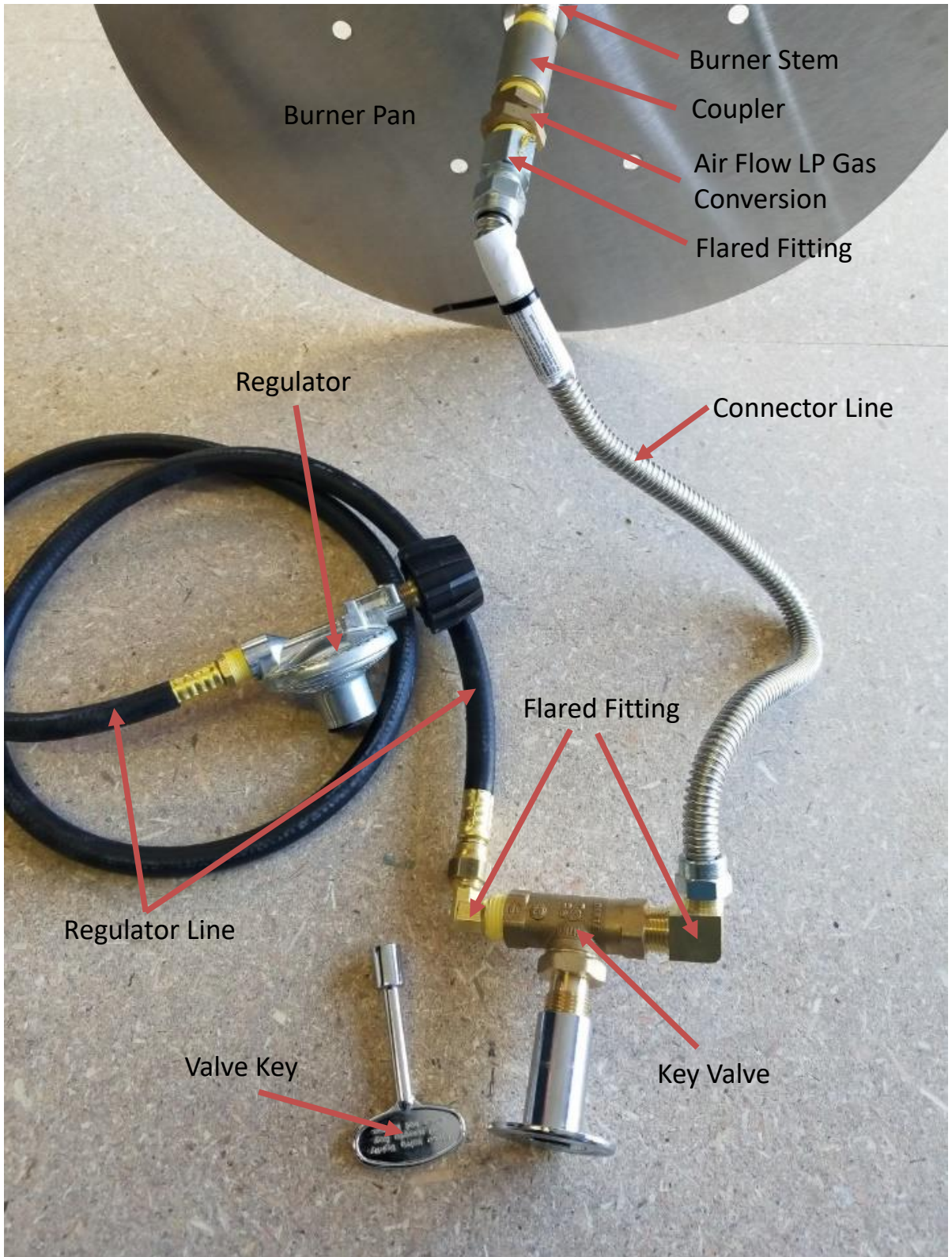
***And***

***Converting from  
NG (natural Gas)  
to  
LP (liquid propane)***



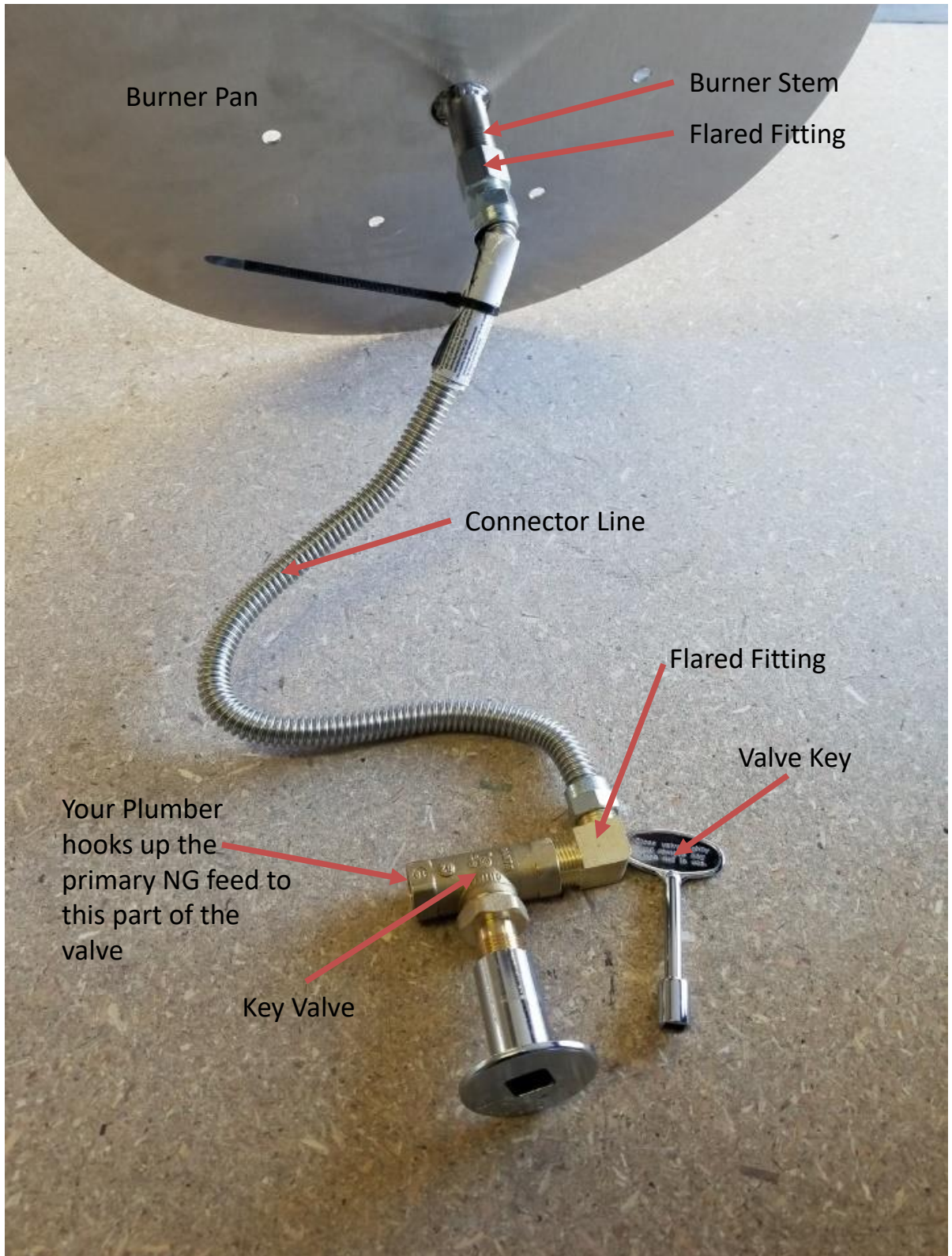
# Converting From Liquid Propane to Natural Gas

These are the components that are used for a LP (Liquid propane setup)



# Converting From Liquid Propane to Natural Gas

These are the components that are used for a NG (Natural Gas setup)

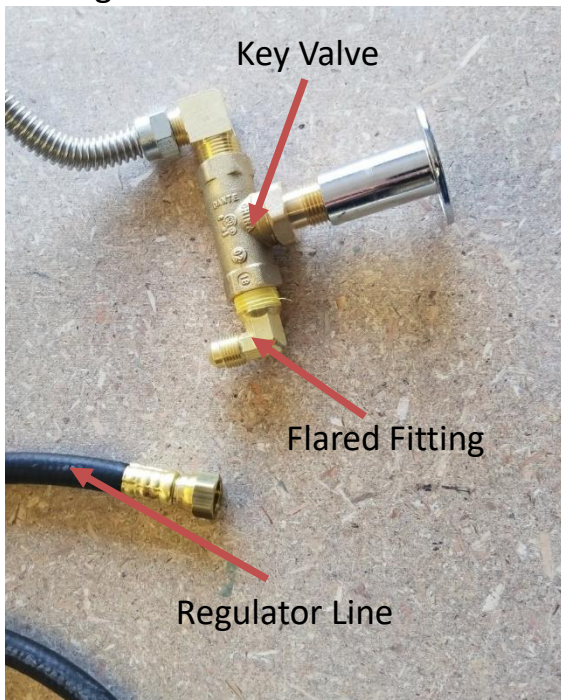


# Converting From Liquid Propane to Natural Gas

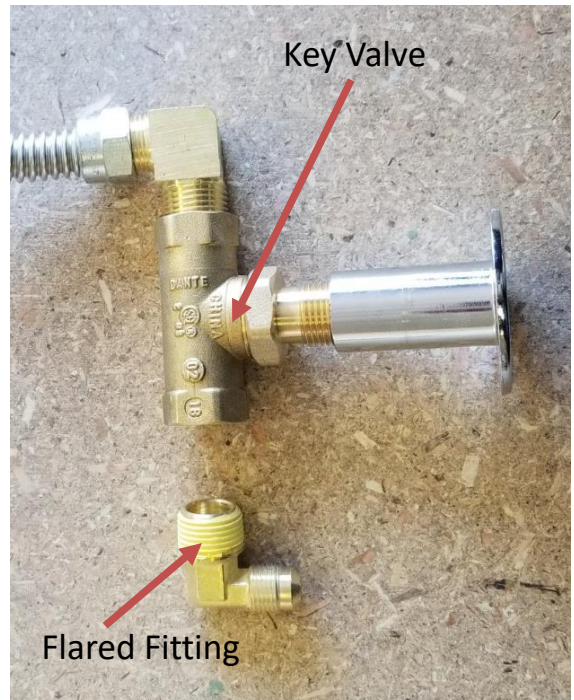
You will want to remove the regulator, regulator line and flared fitting from the key valve.



Remove regulator line from flared fitting

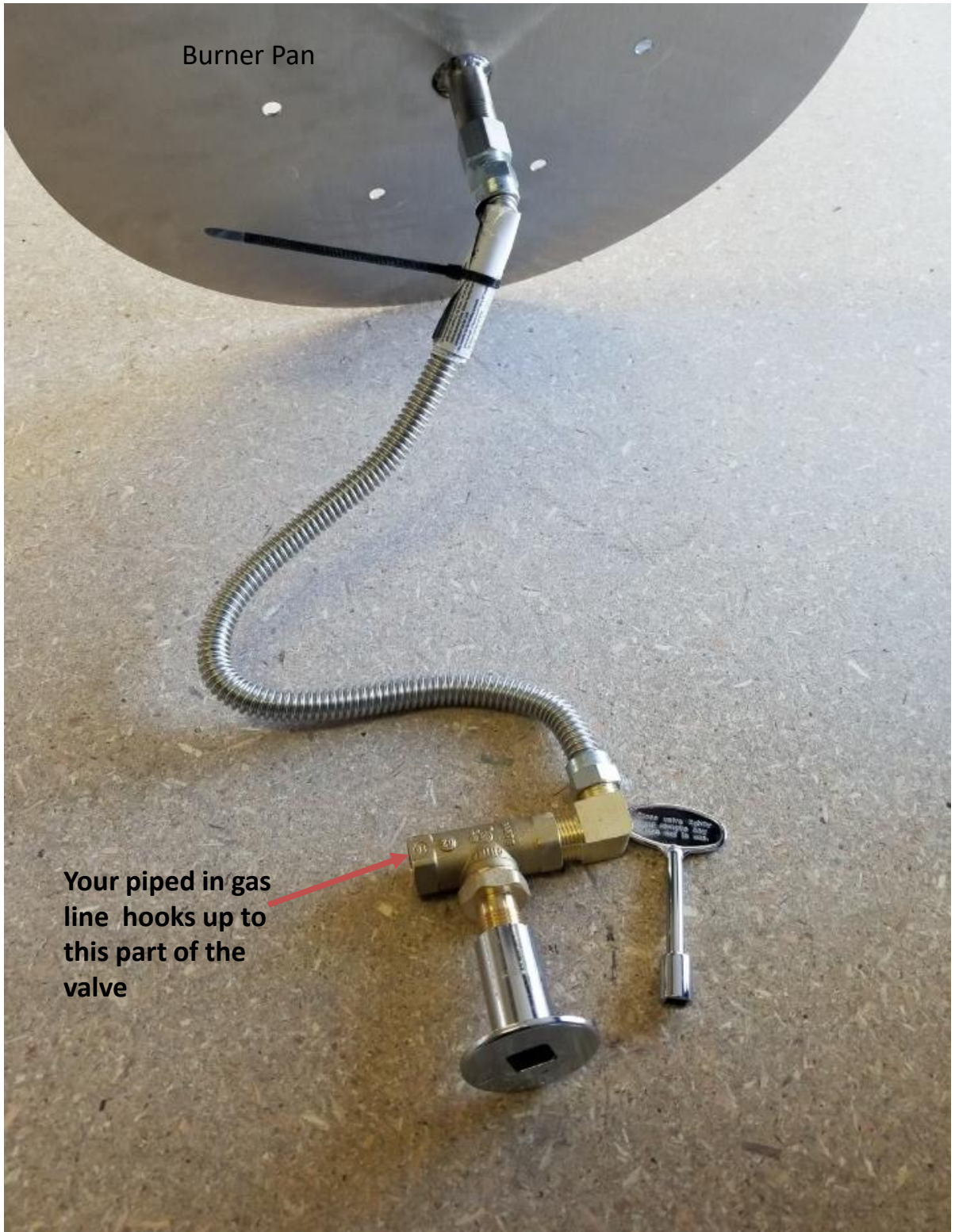


Remove flared fitting from key valve



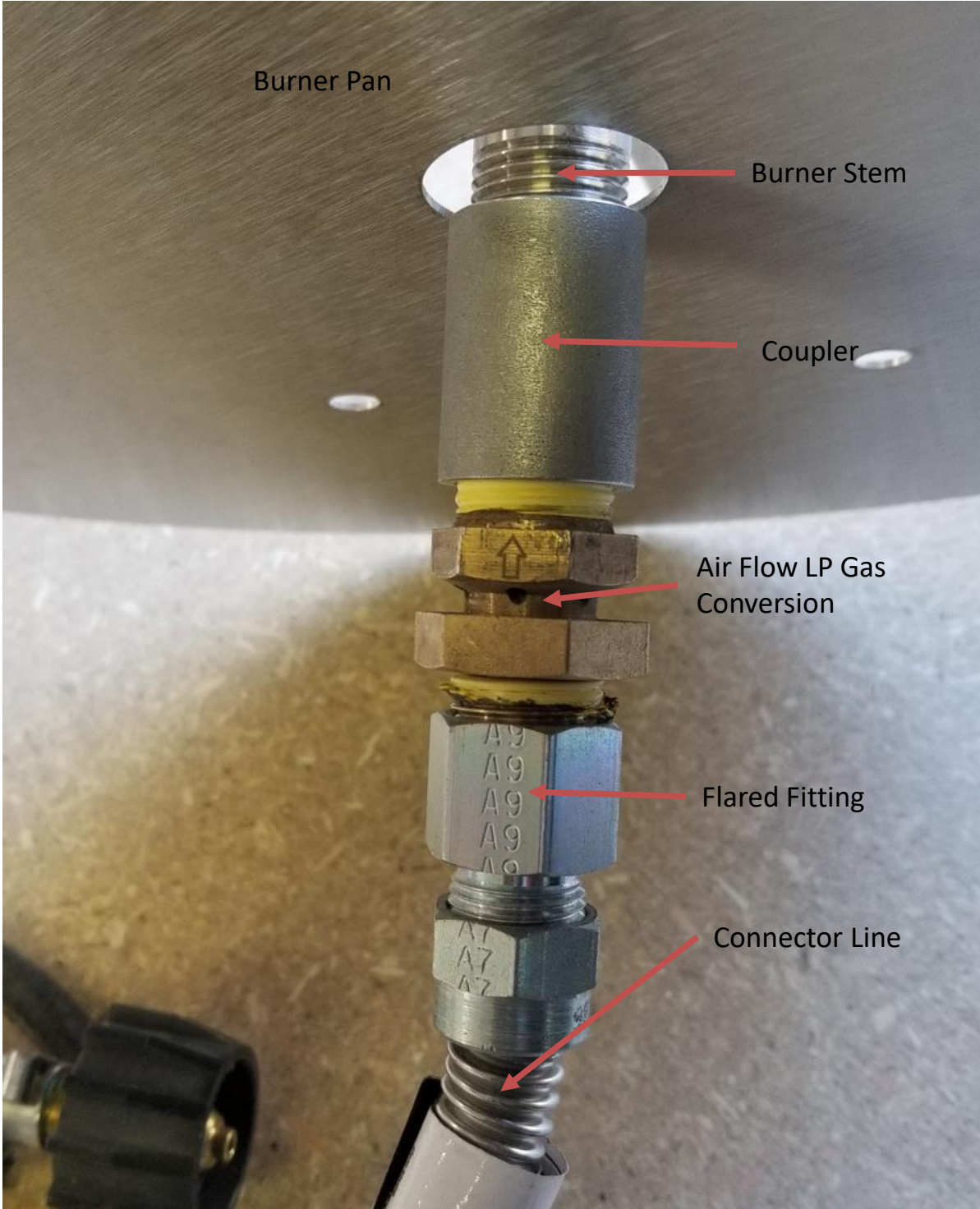
# Converting From Liquid Propane to Natural Gas

This is the completed NG (Natural Gas) set up and is now ready for your technician to complete the connection from the piped in gas lines to the key valve



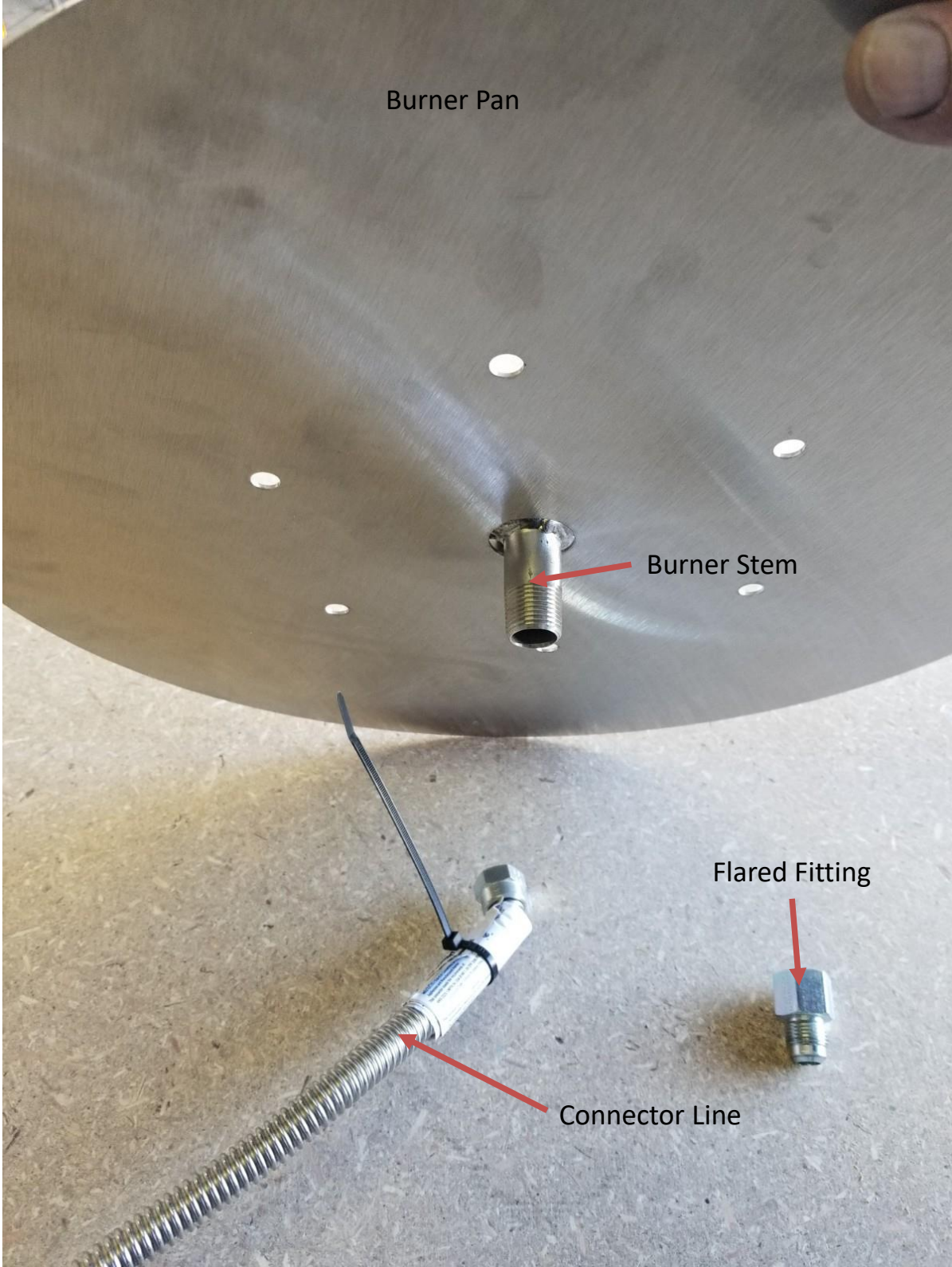
# Convert From Liquid Propane to Natural Gas

You will want to remove connector line first. Then remove the coupler, the air flow LP gas conversion and the flared fitting from the burner stem. Then attach the flared fitting directly to the burner stem and reattach the connector line to the flared stem.



# Convert From Liquid Propane to Natural Gas

This is what it should look like after removing the coupler, the air flow LP gas conversion and the flared fitting from the burner stem and connector line.

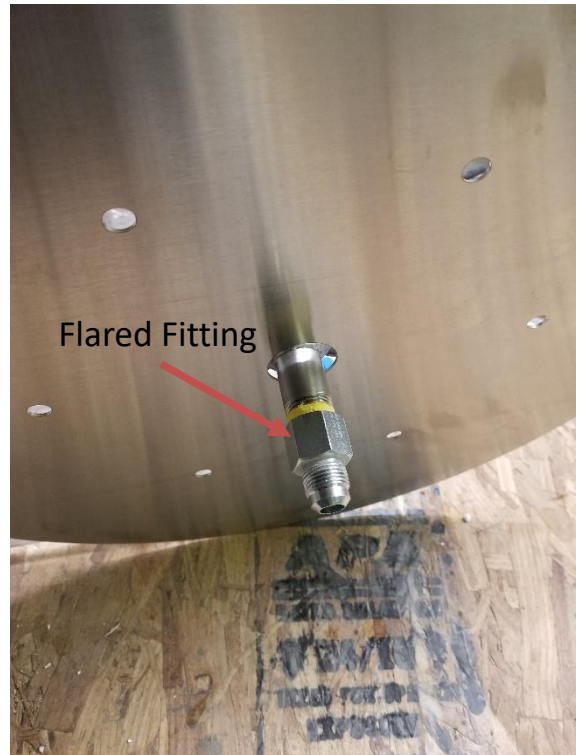


# Convert From Liquid Propane to Natural Gas

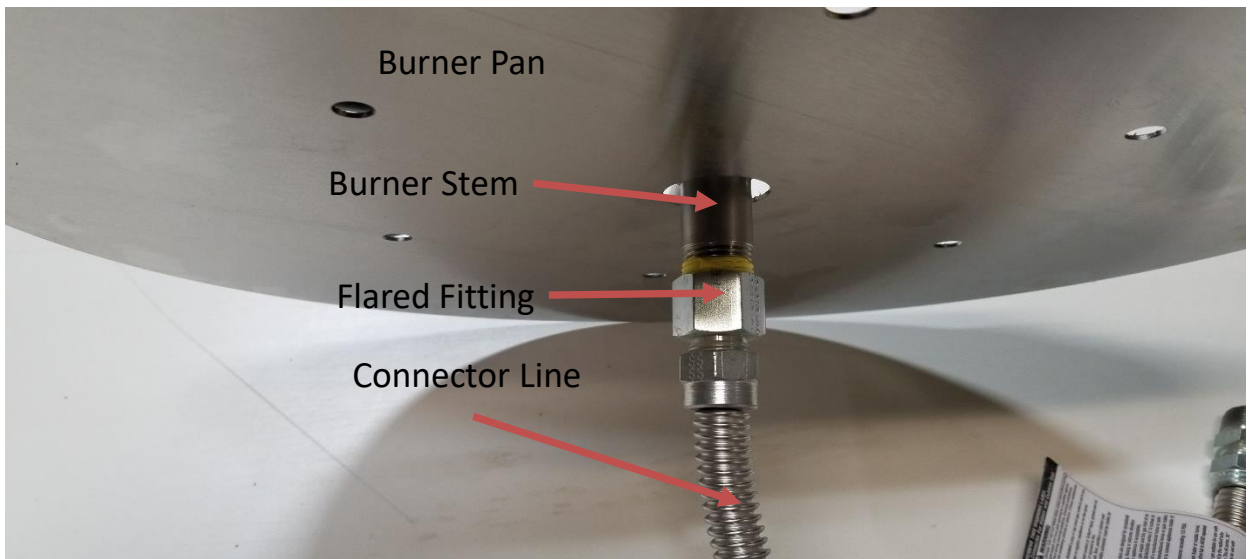
Tape the burner stem threads with gas pipe tape or sealant.



Fasten the burner stem to the flared fitting.



Fasten the connector line to the flared fitting. Make sure all connections are sealed and tight. **Do not use Teflon<sup>®</sup> tape or pipe sealant on any flare ends because you will not obtain a leak-free seal. Keep flare end of fitting free of grease, oil and thread sealant.**



# Lighting Instructions

**WARNING! Failure to follow these instructions could result in property damage, personal injury or death. Read and follow all warnings and instructions in this manual prior to operating this product.**

**STOP!** Read the information provided in this owners manual prior to lighting your Fire Pit / Fire Table.

## **TO LIGHT YOUR FIRE PIT / FIRE TABLE**

1. Turn the gas key clockwise to the off position
2. Wait 10 minutes for any gas to clear out.
3. Place a burning match on the surface of the media that covers the burner. **Do not hold the match by hand.**
4. After the match is burning and in position, rotate the gas key counter-clockwise 1/8 of a turn. If the gas does not light, turn the gas key to the off position. Check to make sure you have propane in your propane tank.

## **TO TURN OFF GAS TO YOUR FIRE PIT / FIRE TABLE**

1. Rotate the gas key clockwise to the off position





# Leak Test Instructions



***WARNING! A leak test must be performed annually and each time a cylinder is hooked up or if a part of the gas system is replaced.***

***WARNING! Never use an open flame to check for gas leaks. Be certain no sparks or open flames are in the area while you check for leaks. Sparks or open flames will result in a fire or explosion, damage to property, serious bodily injury, or death.***

Leak Testing: This must be done before initial use, annually, and whenever any gas components are replaced or serviced. Do not smoke while performing this test, and remove all sources of ignition. Turn burner valve to the off position. Turn gas supply valve on.

Brush a half-and-half solution of liquid soap and water onto all joints and connections of the regulator, hoses, gas lines, air shutter and valves.

Bubbles will indicate a gas leak. Either tighten the loose joint or have the part replaced with one recommended by the HearthCo, Inc. service department. Have the Fire Pit / Fire Table inspected by a certified gas installer or contractor.

If the leak cannot be stopped, immediately shut off the gas supply, disconnect it, and have the grill inspected by a certified gas installer or contractor. Do not use the Fire Pit / Fire Table until the leak has been corrected.

## **Gas Hook-Up Instructions:**

**Piped in Propane Gas Hook-Up:** The piping up to the Fire Pit / Fire Table is the responsibility of the installer and piping should be located to fit in the cavity of the Fire Pit / Fire Table. Use a flexible metal connector to hook up the piped in gas lines to the gas valve that is supplied with the Fire Pit / Fire Table. Ensure that the connector does not pass through a wall, floor, ceiling or partition, and is protected from damage. Do not use a hose to connect the Fire Pit / Fire Table except to connect the cylinder regulator to the piping system. It must be connected with rigid pipe, copper tube or an approved flexible metal connector.

The installation must comply with National Fuel Gas code, ANSI Z223.1 in the United States. The gas supply pipe must be sufficiently sized to supply the BTU/h specified with the Fire Pit / Fire Table , based on the length of the piping run.

**Piped in Natural Gas Hook-Up:** The piping up to the Fire Pit / Fire Table is the responsibility of the installer and piping should be located to fit in the cavity of the Fire Pit / Fire Table. Use a flexible metal connector to hook up the piped in gas lines to the gas valve that is supplied with the Fire Pit / Fire Table. Ensure that the connector does not pass through a wall, floor, ceiling or partition, and is protected from damage. Do not use a hose to connect the Fire Pit / Fire Table except to connect the cylinder regulator to the piping system. It must be connected with rigid pipe, copper tube or an approved flexible metal connector.

The installation must comply with National Fuel Gas code, ANSI Z223.1 in the United States. The gas supply pipe must be sufficiently sized to supply the BTU/h specified with the Fire Pit / Fire Table , based on the length of the piping run.

## **Leak Testing Instructions:**

***WARNING! A leak test must be performed annually and each time a cylinder is hooked up or if a part of the gas system is replaced.***

***WARNING! Never use an open flame to check for gas leaks. Be certain no sparks or open flames are in the area while you check for leaks. Sparks or open flames will result in a fire or explosion, damage to property, serious bodily injury , or death.***

**Leak Testing:** This must be done before initial use, annually, and whenever any gas components are replaced or serviced. Do not smoke while performing this test, and remove all sources of ignition. Turn burner valve to the off position. Turn gas supply valve on.

Brush a half-and-half solution of liquid soap and water onto all joints and connections of the regulator, hoses, gas lines, air shutter and valves.

Bubbles will indicate a gas leak. Either tighten the loose joint or have the part replaced with one recommended by the HearthCo, Inc. service department. Have the Fire Pit / Fire Table inspected by a certified gas installer or contractor.

If the leak cannot be stopped, immediately shut off the gas supply, disconnect it, and have the grill inspected by a certified gas installer or contractor. Do not use the Fire Pit / Fire Table until the leak has been corrected.